

4

3

2

1

D

D

C

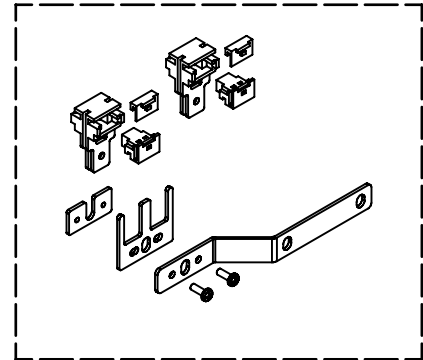
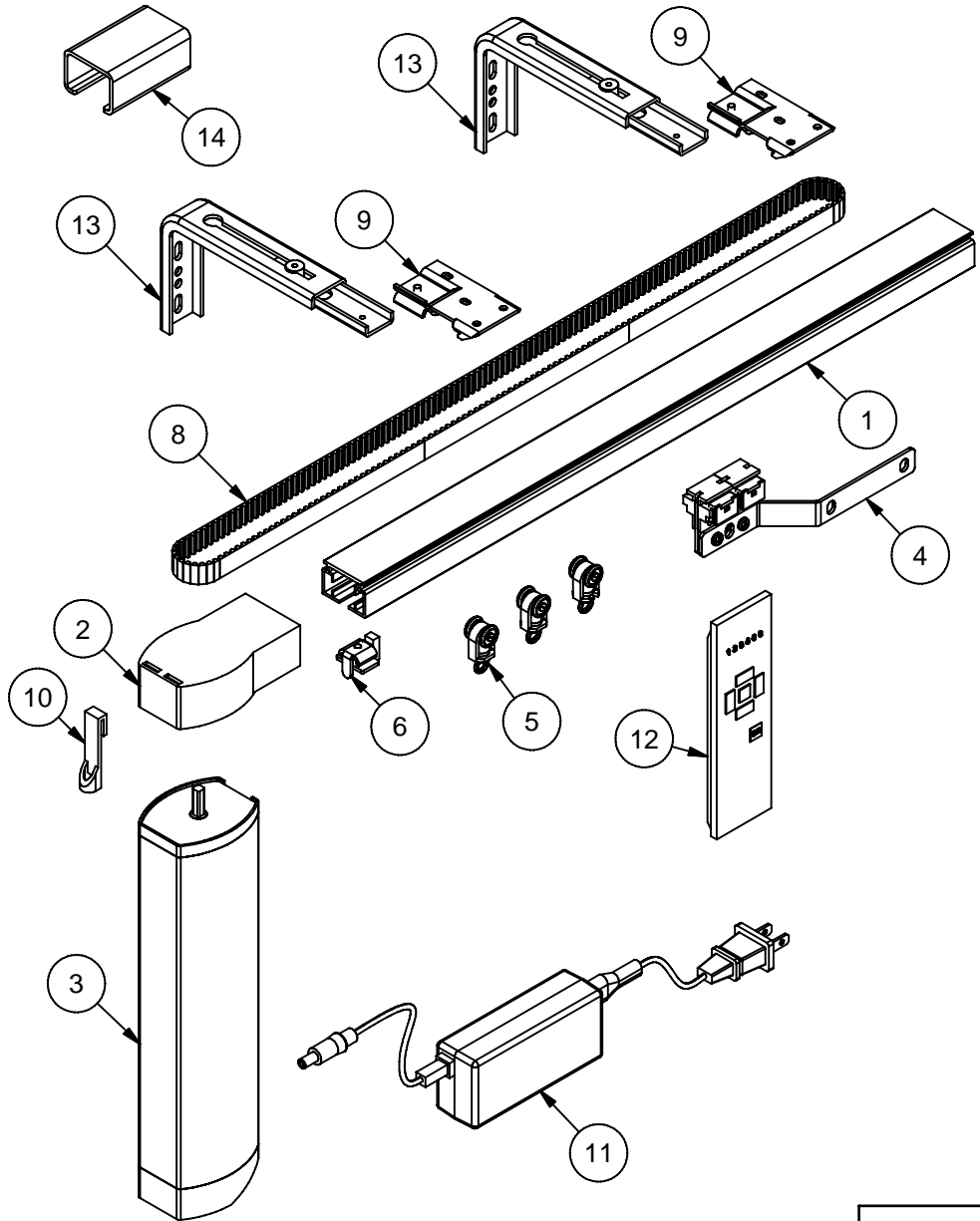
C

B

B

A

A



Master Carrier (#4)  
Sub-Assembly Detail

Parts List		
ITEM	DESCRIPTION	PART NO.
1	Headrail	310.6070
2	Drive/Non-Drive End	266.5105
3	24V DC Motor	101.9010
4	Master Carrier Assembly	266.4955
5	Drapery Carrier	240.7505
6	Cager	240.7530
7	Cover Plate	266.5110
8	Transportation Belt	290.3005
9	Mounting Bracket	236.1610
10	Fabric Wrap Clip	246.0650
11	DC Power Supply	400.2300
12	Handsender	490.2075
13	Optional Wall Mount	236.1860
14	Optional Splice	246.2220

<p><b>CONFIDENTIAL</b></p> <p>All information disclosed in this document is proprietary to BTX Window Automation. Holder agrees to maintain it in confidence and must not replicate or reveal this information in any manner.</p>	Project	<b>Drapery</b>		
	Dim			
	TOLERANCES			
	.XX ± .015	.XXX ± .005	ANG ± 1°	
By: G. Bennett		Date: 1-Nov-07		Scale: 1/4
		Dwg No: sunp drape assy		Rev
		Date: 1-Nov-07		Scale: 1/4
		Sheet 1 of 4		



Tumo™ DC Drapery System

4

3

2

1

4